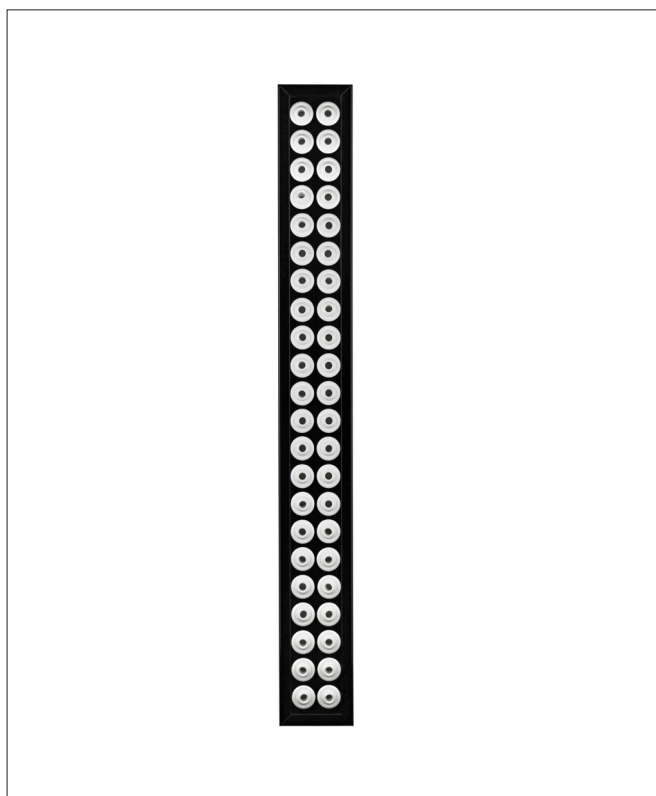


slot diffusers with long-throw nozzles NS/DZ



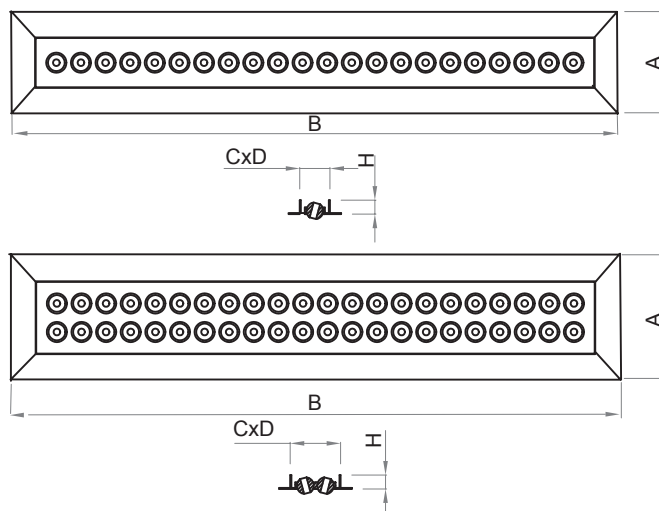
DESCRIPTION

NS/DZ are slot diffusers with adjustable long-throw nozzles designed low- and medium-pressure installations. As the shape of air outlet can be adjusted, the air can be supplied in any direction. Air can be simultaneously supplied vertically and horizontally, therefore the air can be supplied at the temperature lower or higher than the temperature in the ventilated room.

NS/DZ diffusers can be used in air-conditioning and ventilation systems for halls and offices where comfortable temperature is required.

FEATURES

- diffusers made of steel sheet with aluminium frame
- standard make includes one, two or three rows of long-throw nozzles
- nozzles position can be adjusted as required
- standard length of diffusers: 1000, 1500 or 2000 mm
- nozzles are made of high-quality material
- can be installed with the expansion box SR/NSDZ
- available in standard RAL 9003 colour
- upon customer's request, can be made available in any size and colour from RAL palette
- can be of any size up to 2mb



STANDARD SIZES

NS/DZ	A [mm]	B [mm]	C [mm]	D [mm]	H [mm]	Number of nozzles
1000/22	80	1030	50	1000	20	22
1000/44	120	1030	90	1000	20	44
1500/33	80	1530	50	1500	20	33
1500/66	120	1530	90	1500	20	66
2000/44	80	2030	50	2000	20	44
2000/88	120	2030	90	2000	20	88

ORDER REFERENCE

NS / DZ - 1000 / 22	- RAL9003
type	colour
Diffuser length	number of nozzles

INSTALLATION

NS/DZ diffusers are designed for installation with the expansion box SR/NSDZ Use rivets or screws.

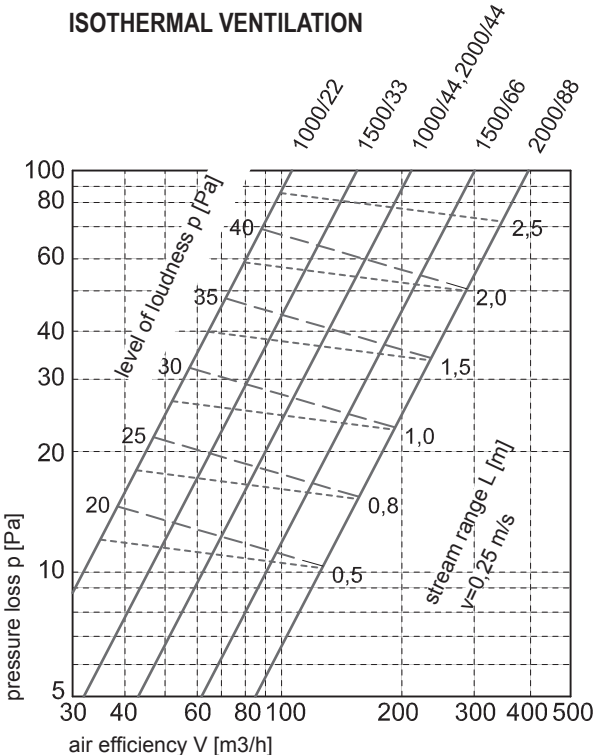
FEATURES

The figure shows airflow capacity V (m³/h), pressure loss p (Pa), airflow scope L (m) for end speed of 0.2 m/s, and volume level [db(A)].

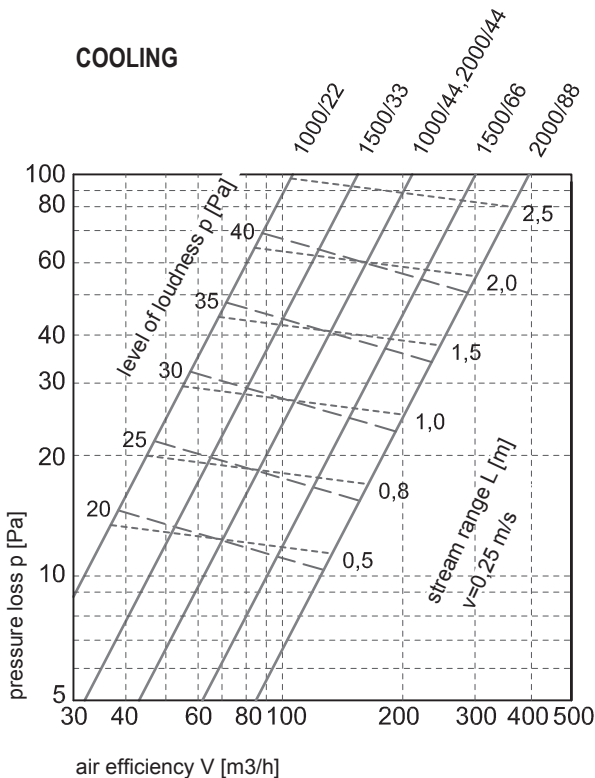
7.1 NS/DZ

slot diffusers with long-throw nozzles NS/DZ

ISOTHERMAL VENTILATION



COOLING



HEATING

